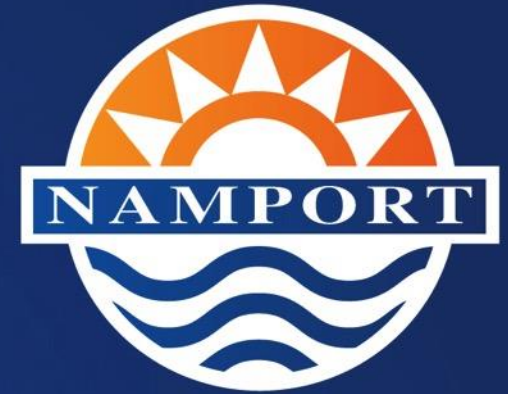


PRESENTATION



GENERAL PORTS UPDATE – OIL AND GAS SUPPLY BASE FOCUS, v1

6 Oct 2025

Port of Walvis Bay

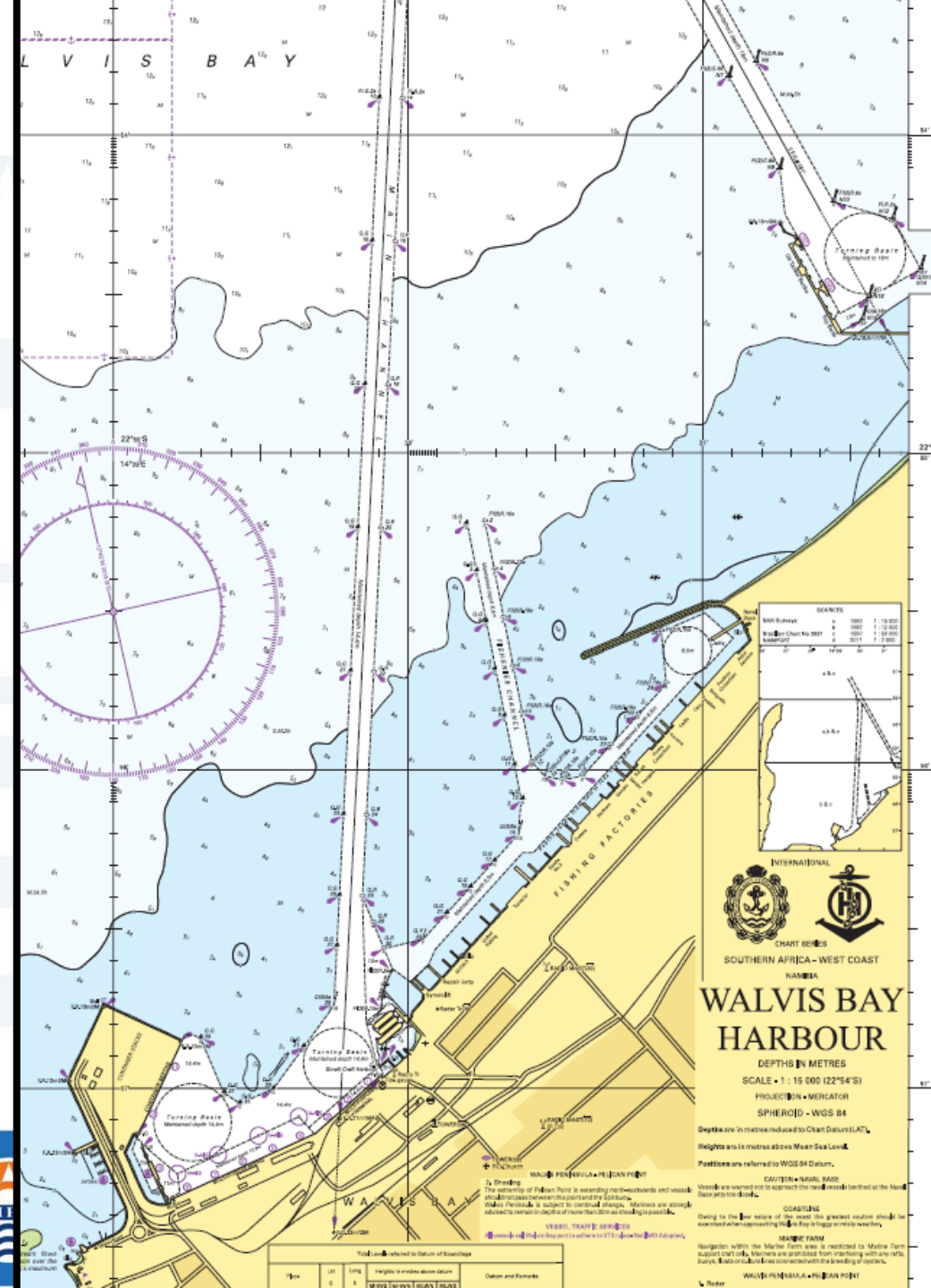
- 3 sections:
 - South Port (SP)
 - Fishing Harbour (FH)
 - North Port (NP- newest section)

- **Master Plan has adequate development capacity to cater for demand over the next 100 years**



Port of Walvis Bay

- Water depths:
 - South Port (SP) – maintained dredged depth ranges from 10 to 17m below CD.
 - Fishing Harbour (FH)- dredged depth ranges from 4 to 6.5m below CD.
 - North Port (NP- newest section) - dredged depth ranges from 7.5 to 16m below CD.



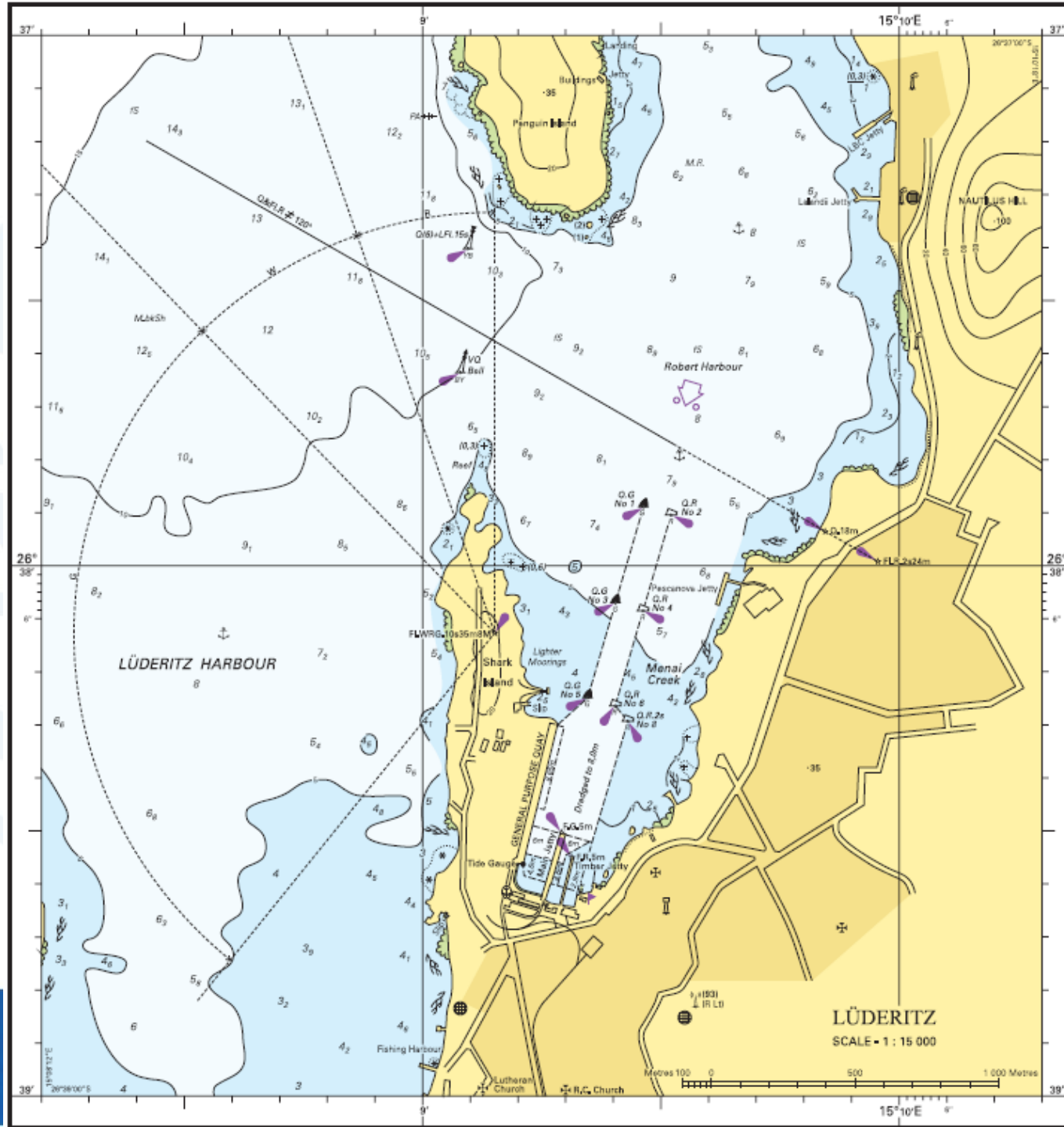
Port of Lüderitz

- 3 sections:
 - Robert Harbour
 - Lüderitz Bay (undeveloped)
 - Angra Point (undeveloped)
- **Master Plan has adequate development capacity to cater for demand over the next 100 years**



Port of Lüderitz

- Water depths:
 - Robert Harbour – maintained dredged depth ranges from 3 to 8.65m below CD.
 - Lüderitz Bay – undeveloped (14m possible)
 - Angra Point - undeveloped (16m possible)



PROBLEM/ OPPORTUNITY STATEMENT – UPSTREAM OIL AND GAS SUPPLY BASE REQUIREMENTS

1. **EXPLORATION AND APPRAISAL PHASE** currently ongoing, can easily be accommodated in the two existing ports;
2. **DEVELOPMENT/CONSTRUCTION** of oil fields PHASE will commence with TOTALENERGIES in 2027. Port capacity required for development phase is ca 10x more than for exploration and appraisal phase.
3. **PRODUCTION PHASE (first oil)**, port capacity is similar to exploration and appraisal phase.

SOLUTION TO THE PROBLEM

NAMPORT solutions:

1. **SHORT TERM:** Walvis Bay and Luderitz status quo, with some optimization of Walvis Bay South Port (Berth 9);
2. **MEDIUM TERM:** Port of Luderitz Robert Harbour Expansion
OPTION 1 – NEEDED BY Q2 2027 (Namport development, but private sector operations on the supply base (300m berth))
3. **LONG TERM:**
 - Lüderitz Bay OPTION; **(private sector DBOOT project);**
 - Port of Walvis Bay North Port; **(private sector DBOOT project);**

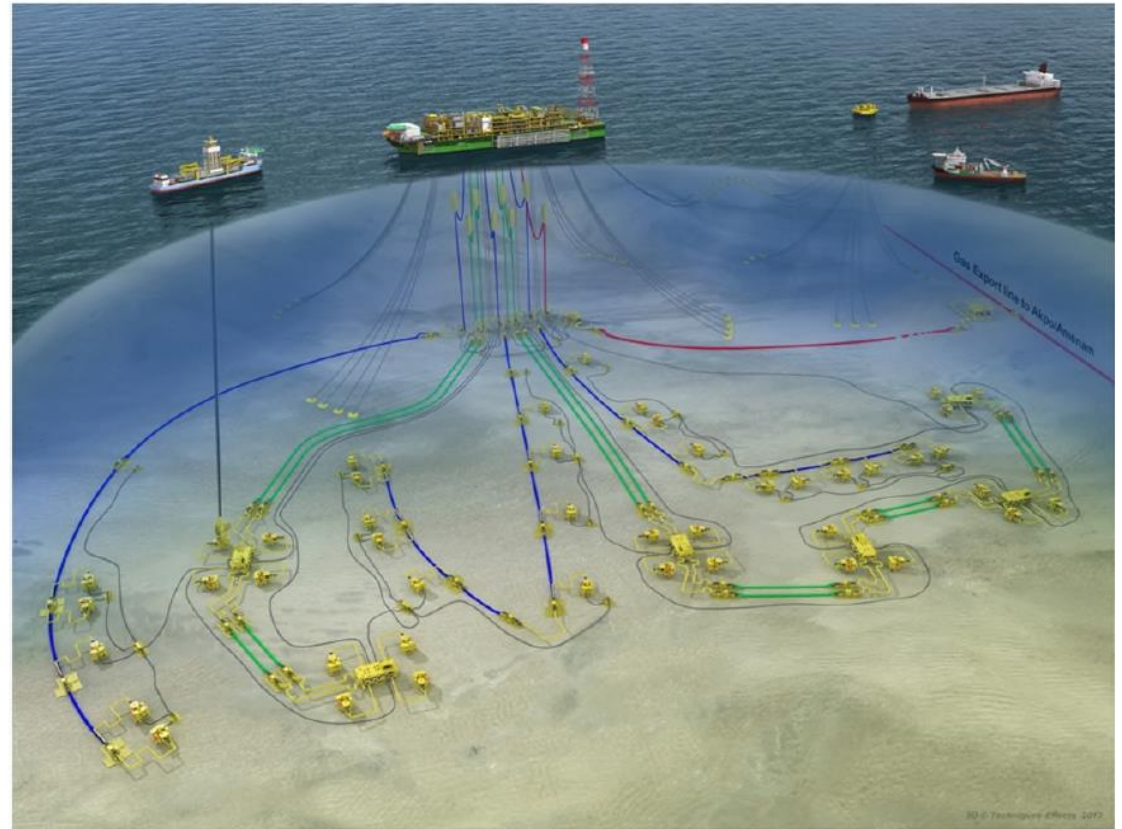
PIPE LAYING VESSELS FOR DEVELOPMENT PHASE – 7 to 12m req.



PLATFORM SUPPLY VESSELS FOR SUPPORTING THE RIGS OR FPSO'S 5 to 8m req.



Typical Deep water project - Example

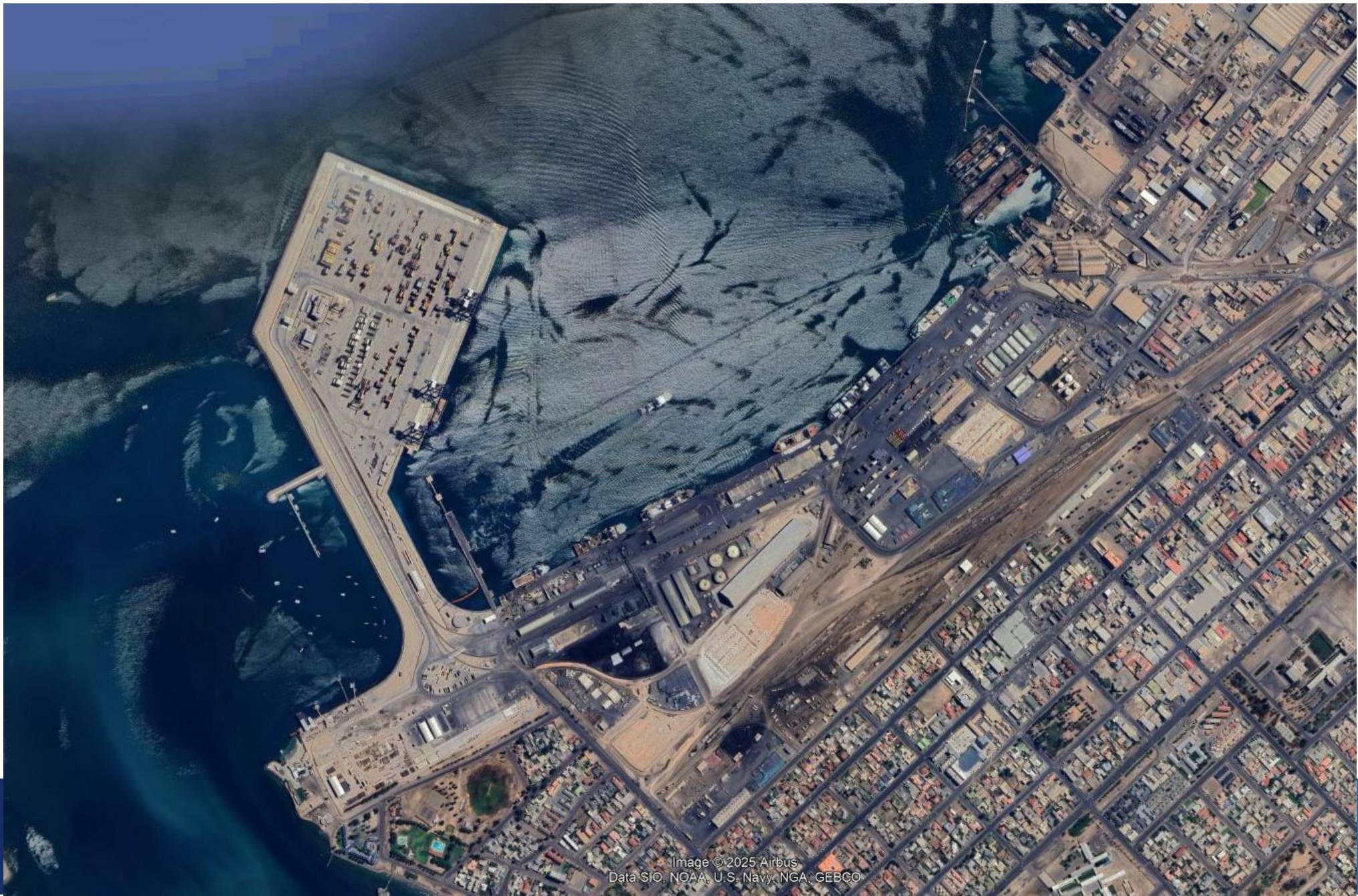


3 | 04/10/2024 – Venus Pre-Project

PORT OF WALVIS BAY – OIL AND GAS SUPPLY BASE OPTIONS

1. Short Term Option relies on using existing infrastructure in the South Port and is the status quo currently.
2. Medium Term option relies on continuing to use the South Port but optimize the existing port infrastructure to gain more capacity which can also be used by common user general cargo operations.
3. Long Term solution is a Design Build Own Operate and Transfer (DBOOT) concession for a Greenfields supply base at the North Port

Port of Walvis Bay South Port



Port of Walvis Bay South Port – SHORT TERM – 3 YEAR SOLUTION FOR OIL AND GAS SUPPLY BASE



OIL AND GAS
ACCESS TO
BERTHS 7,8 AND
9: 11m DEPTH

OIL AND GAS

Port of Walvis Bay South Port – SHORT TERM – 3 YEAR SOLUTION FOR OIL AND GAS SUPPLY BASE

- **SHORT TERM SOLUTION:** Existing South Port to support the exploration and appraisal phase that is currently underway in the Orange basin.
- Includes a project to modify the existing facilities to unlock additional capacity at berth 7, 8 and 9 which are common user general cargo berths.
- To suffice for 3-5 years at most, which covers the exploration phase fully, plus the initial one or two years of the development phase for Venus oil field. Will also serve as overflow.
- Size of Land inside the port is being supplemented with land in town.
- Plans are being made to make more land available in the short term.
- 3 berths, berth 7, 8 and 9, with 11m depth below chart datum, 10.5m max draught.;
- Heavy lift capacity;
- Berth 9 modification to unlock more capacity.

Port of Walvis Bay South Port – BERTHS 7, 8 AND 9



Port of Walvis Bay South Port – SOUTH GATE SUPPLY BASE



Port of Walvis Bay South Port – LONG TERM SOLUTION FOR OIL AND GAS SUPPLY BASE

PORT OF WALVIS BAY NORTH PORT OIL AND GAS SUPPLY BASE

- **LONG TERM SOLUTION:** to support all oil and gas supply base activities that are currently occurring in the South Port;
- To be built on reclaimed land.
- 100 hectares of backup land, reclaimed from dredged material sourced from dredging the new required basin.
- 1200m or more Berth length at -16m CD depth.
- Completely Greenfields;
- To be developed as a DBOOT concession.

Port of Walvis Bay South Port – LONG TERM SOLUTION FOR OIL AND GAS SUPPLY BASE



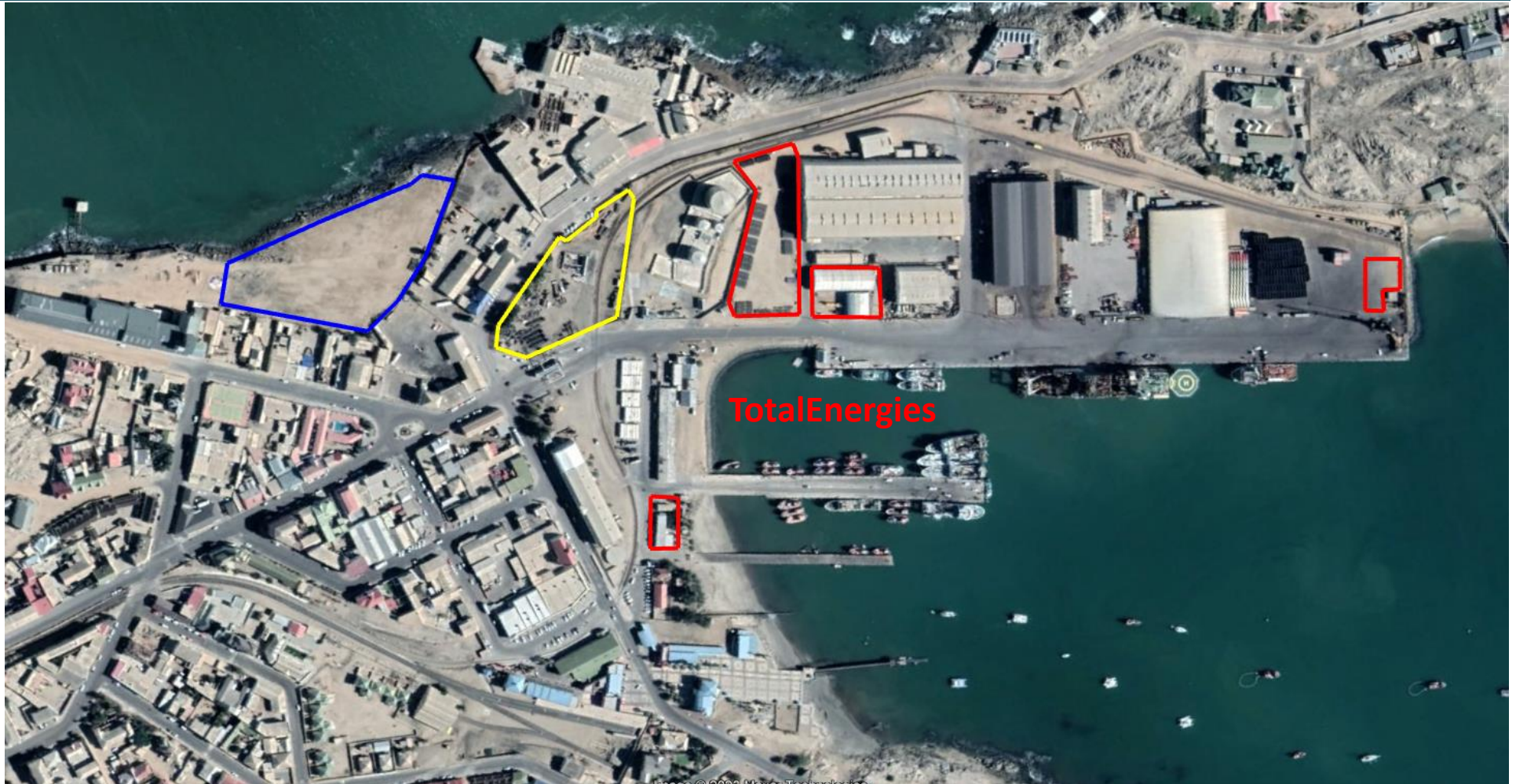
North Port Oil and Gas Supply Base Location – all on reclaimed land



PORT OF LÜDERITZ – OIL AND GAS SUPPLY BASE OPTIONS

1. Short Term Option relies on using existing infrastructure in Robert Harbour and is the status quo currently.
2. Medium Term option relies on Heavy Expansion of Robert Harbour by Namport and dedicating a certain portion of the expanded port for oil and gas supply base operations and appointing a dedicated operator for its operations.
3. Long Term solution is a Design Build Own Operate and Transfer (DBOOT) concession for a Greenfields supply base at Lüderitz Bay.

Port of Luderitz – SHORT TERM – STATUS QUO - 2 YEAR SOLUTION FOR OIL AND GAS SUPPLY BASE



1. red: current oil and gas supply base leased sites-8700m²,
2. yellow: additional land earmarked for oil and gas supply base activities-7000m², blue: land outside the port also for possible use as a supply base-14000m².
3. Total potential land usage by oil and gas = 3 hectares approximately.

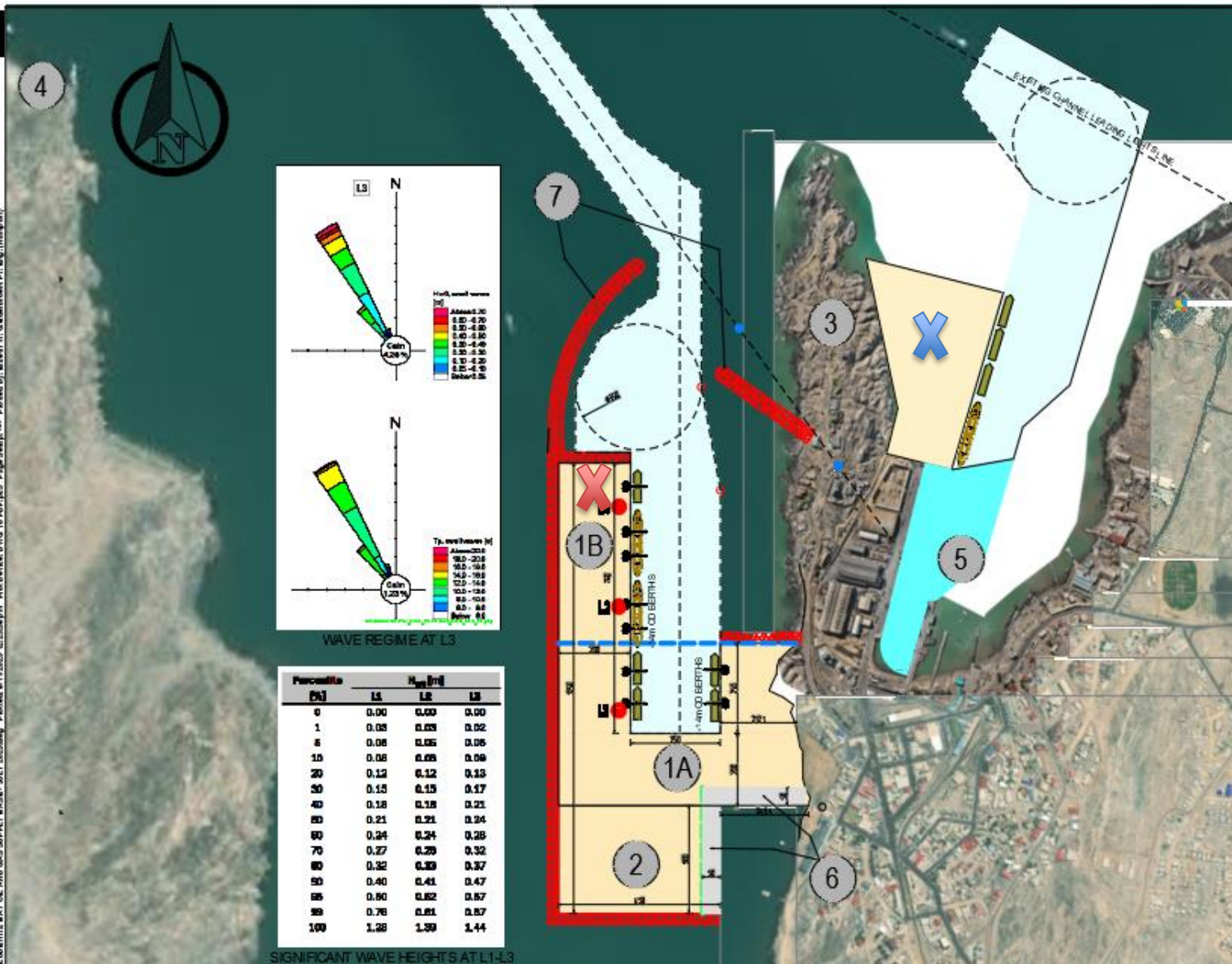
PORT OF LUDERITZ – MEDIUM TERM PLANS: ROBERT HARBOUR QUAY WALL EXPANSION PHASE 1



PORT OF LUDERITZ – MEDIUM TERM PLANS: ROBERT HARBOUR QUAY WALL EXPANSION PHASE 1

- NAD 4 BILLION COST ESTIMATE for 500m of new quay wall;
- 500m quay wall length at 9m depth, 7 to 14ha land reclamation;
- EIA currently underway, to be completed later this year (2025);
- Funding already secured.
- FEED design underway;
- EPC Tender to be issued by 2026;
- First section of new quay wall to be commissioned by 2027, and the final section by end 2028/9;
- 300m of this new berth length to be ring fenced and used for oil and gas supply base activities.

PORT OF LÜDERITZ EXPANSION PROJECTS



X 500m ROBERT HARBOUR EXPANSION WHICH INCLUDES 300m OIL AND GAS SUPPLY BASE

X LÜDERITZ BAY OIL AND GAS SUPPLY BASE

LÜDERITZ BAY OIL AND GAS SUPPLY BASE

- **LÜDERITZ BAY (OPTION 1a, 1b and 2 on previous slide):** To be given the private sector to develop jointly with Namport as a pure oil and gas supply base (DBOOT) for additional capacity. This option is more costly and will take more time, but the advantages are:
 - Deeper water depth, >14m;
 - More land can be reclaimed, >30 hectares;
 - Can be developed independent of other options;
 - Can be developed in phases as the need dictates;
 - Less environmental and social impacts;
- This option is being studied and compared to the Robert Harbour Expansion option, specific for oil and gas supply base activities. The limitation with Robert Harbour is the inability to support any SURF activities due to limited water depth. Robert harbour can only support SPS and drilling activities.



PORT OF LUDERITZ – MEDIUM TERM PLANS

ROBERT HARBOUR OR LÜDERITZ BAY PORT DEVELOPMENT IN ITSELF WILL NOT ENSURE SUCCESS IN LUDERITZ:

- The entire town will need to be expanded to a scale that is double what it is today.
- The expansion and upgrading of the town itself will take time but can be done in parallel to the port development.

THANK YOU!



17 Rikumbi Kandanga Rd, Walvis Bay, Namibia | P O Box 361, Walvis Bay, Namibia
Tel: +264 64 208 2111 | Email: info@namport.com.na | Website: www.namport.com