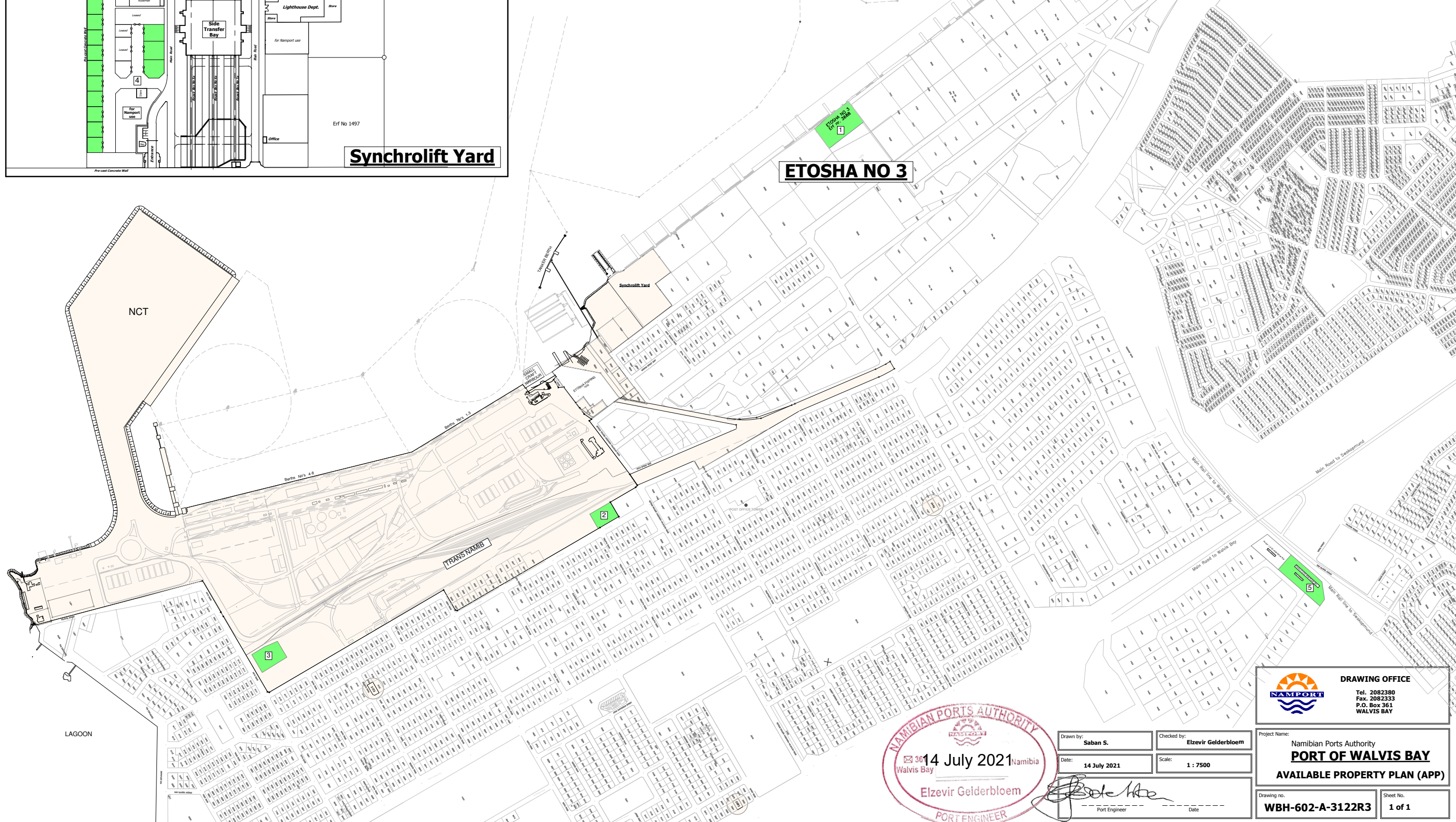


SOUTH PORT PROPERTIES AVAILABLE FOR LEASE				
NO.	STAND NO. & SUBURB	BRIEF DESCRIPTION	ZONING	LAND AREA
1	ERF 3688, WALVIS BAY	LAND at ETOSHA NO 3 STORE	MP, Multipurpose (fish landing and processing, ship repair, etc.)	16 840 m <sup>2</sup>
2	Portion of Erf No 1920	Open land next to Trans Namib Station Building	MP, Multipurpose (Retail, hospitality, office block, business premises, etc.)	± 5 895 m <sup>2</sup>
3	Portion of Trans Namib Yard	Open land with buildings (previous transnamib road motor transport section)	LS, Logistics (warehousing, cargo storage area, etc.)	± 8 900 m <sup>2</sup>
4	Synchrolift Yard - Erf No 3534, Walvis Bay	various open plots	SR, Ship repair	From 225 m <sup>2</sup> - 350 m <sup>2</sup> & 1 042 m <sup>2</sup>
5	Erf 4428 Narraville Industrial, Walvis Bay	Portion 2 of open plot Erf 4428	Industrial	15 255 m <sup>2</sup>

**IMPORTANT NOTES:**  
 1. This APP will be updated periodically and thus replaced by subsequent newer versions without prior notice. Please monitor the Namport website to download the latest version.



**NAMIBIAN PORTS AUTHORITY**  
 3614 July 2021 Namibia  
 Walvis Bay  
 Elzevir Gelderbloem  
 PORT ENGINEER

Drawn by: **Saban S.**  
 Date: **14 July 2021**  
 Checked by: **Elzevir Gelderbloem**  
 Scale: **1 : 7500**  
 Port Engineer: *[Signature]*  
 Date: \_\_\_\_\_

**DRAWING OFFICE**  
 Tel. 2082380  
 Fax. 2082333  
 P.O. Box 361  
 WALVIS BAY

Project Name:  
 Namibian Ports Authority  
**PORT OF WALVIS BAY**  
**AVAILABLE PROPERTY PLAN (APP)**

Drawing no. **WBH-602-A-3122R3**  
 Sheet No. **1 of 1**